

# TULIVU WATAMU RESIDENCE



**LIVE THE COASTAL DREAM**

# About Tulivu Watamu Residence

Tulivu Watamu residence is a prestigious development located just 700 meters from the pristine beach in the heart of Watamu, one of Kenya's premier coastal destinations. Tulivu Watamu residence is poised to redefine coastal living, offering an exclusive enclave of 1/2 acre, 1/4 acre, and 1/8 acre plots within a gated community.

Beyond providing a piece of land, Tulivu Watamu residence promises an unparalleled lifestyle experience and a sound investment opportunity. With meticulous planning and attention to detail, this development is set to become the ultimate masterpiece of serene coastal living, harmonizing natural beauty with modern convenience.

## Site Plan



# Tulivu Watamu Residence Club House

As the central point of Tulivu Watamu residence , our club house stands as a testament to luxury, leisure, and a sense of belonging. Here, you'll find a space designed for both relaxation and celebration



## Amenities

### 1. Club House

Spread across a lush 1 acre. It hosts the club house, beautifully landscaped gardens, in the fresh air, and family friendly

### 2. Swimming Pool & Gym

Dive into a world of fitness and relaxation with our pristine pool and state-of-the-art gym.

### 3. Gated Entrance & Perimeter Wall

Your security is our priority. Our gated entrance and perimeter wall provide peace of mind, ensuring a safe haven for you and your loved ones

# Prices

Designed to fit all budgets, exclusive of transfer and legal fees.  
Please be advised that prices are subject to change, reflecting ongoing value addition.

## Phase 2

1/8 Acres	KES 750k
1/4 Acres	KES 1.4M
1/2 Acres	KES 2.7M

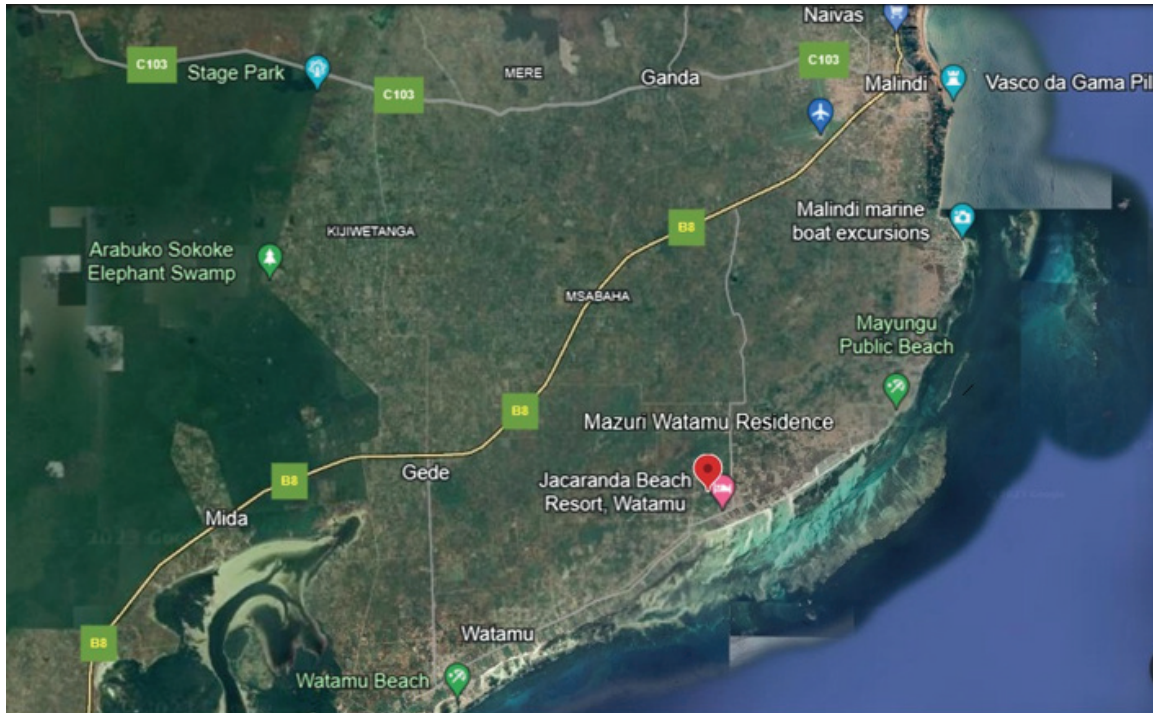
## Phase 3

1/8 Acres	KES 1.25 M
1/4 Acres	KES 2.4 M
1/2 Acres	KES 4.6 M

# Payment Plans

20% Deposit with balance spread over 6 months Instalments

# Map



[https://maps.app.goo.gl/NXYXpUGNzLRd9H7X8?g\\_st=ic](https://maps.app.goo.gl/NXYXpUGNzLRd9H7X8?g_st=ic)

## Location Highlights

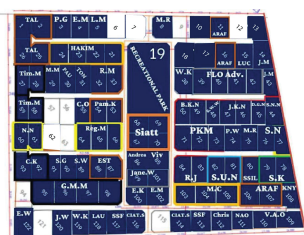
- Located at Watamu Jacaranda Area, Off Kanani Road.
- Close to world class Beach Resorts.
- Center point between Malindi and Watamu with good access to both tourist towns
- Nature lovers have access to beautiful ocean marine life at various marine reserves in Watamu & Malindi, Love Islands and Mida Creek
- Water-sports activities. From Wake-boarding and Water-skiing in Mida Creek, Kayaking and funboats to scuba diving, snorkelling and kite-surfing

## Nearby Connections

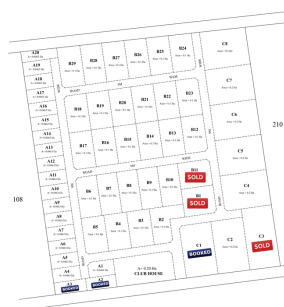
- 9 km from Malindi International Airport
- 8 km from Naivas, Malindi
- 7 km from Turtle Bay Watamu
- 8 km from Watamu Marine National Reserve
- 40 km to Kilifi Town
- 77 km from Vipingo Airstrip
- 108 km from Mombasa CBD
- 127 km from Moi international Airport
- 122 km from SGR Mombasa Terminus



**Book a site visit today !**



**Phase 2**



**Phase 3**

**Proposed Subdivision**

Your dream holiday home is just a plot away.

# Other Projects



**MURSONS**  
REALTORS LIMITED  
Inspiring your dreams

## BATIAN VIEW NANYUKI

Residential, Commercial & Agricultural  
Plots

Cash Price

**KSH.300,000**

[View details.....](#)



**MURSONS**  
REALTORS LIMITED  
Inspiring your dreams

## HILLS VIEW GARDENS JOSKA

Residential & Agricultural Plots

Cash Price

**KSH. 700,000**

[View details.....](#)



**MURSONS**  
REALTORS LIMITED  
Inspiring your dreams

## BARAKA GARDENS JUJA FARM

Residential & Agricultural Plots

Cash Price

**KSH.700,000**

[View details.....](#)



## TUMAINI GARDENS MATUU

Residential & Commercial Plots

Cash Price

**KSH. 200,000**

[View details.....](#)



*Book now !!*



## Contact Us

Mursons House, Off USIU Road

0769124444

[info@mursonsrealtors.co.ke](mailto:info@mursonsrealtors.co.ke)

[www.mursonsrealtors.co.ke](http://www.mursonsrealtors.co.ke)